

# Public warning systems in Denmark

Major accidents or disasters are rare in Denmark, but when they do occur, the police will warn of the danger where relevant. They can do this locally, regionally or nationally with the nationwide warning systems: the warning sirens and S!RENEN

## About the warning sirens

If the police activate the physical warning sirens in your neighbourhood, it's because you need to be aware of a possible danger.

There are approximately 1,000 warning sirens in Denmark, and they are typically mounted on masts or roofs in urban areas.

## Know the signal

The warning sirens have two signals: Alert and warning. The alert consists of a tone that increases quickly and decreases slowly. It is repeated four times.

The tone of the alert can be illustrated like this:



The warning is one long tone and can be illustrated like this:



Both signals last 45 seconds.

## About S!RENEN

If you are in a danger area, the police can alert most mobile phones with S!RENEN, an alert system that uses the mobile network to send warnings to phones in specific areas.

With S!RENEN, the police can use sound and text to draw attention to the situation and issue instructions to those in the affected area. The authorities do not receive any information about the phones in the area.

## Know the signal

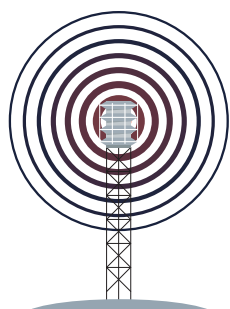
S!RENEN alerts you via your mobile phone with a special and distinctive alarm sound that lasts approximately 12 seconds.

The alarm sound from S!RENEN can be illustrated like this:



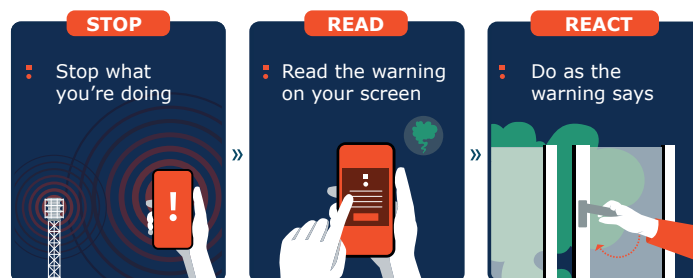
**When it's serious:** When you hear the warning sirens or S!RENEN, you are in a possible danger zone.

**The alert sirens** are telling you to do the following:



- **Go inside or stay inside**
- **Find more information on DR and TV2**

**S!RENEN** sends the information and action instructions to your phone. That's why you should always follow the advice:



S!RENEN and the physical warning sirens are tested every year on the first Wednesday of May at 12 pm. Use the QR code to read more about

